

RAGE 2022 @ DAC 2022

Real-time And intelliGent Edge computing workshop

July 10th, 2022, San Francisco, CA



Reliable Distributed Systems
Industrial use-cases for real-time
edge-computing

Arne Hamann
Bosch Research

Outline



**Centralized E/E
Architectures**



**Software-Defined
Vehicles**

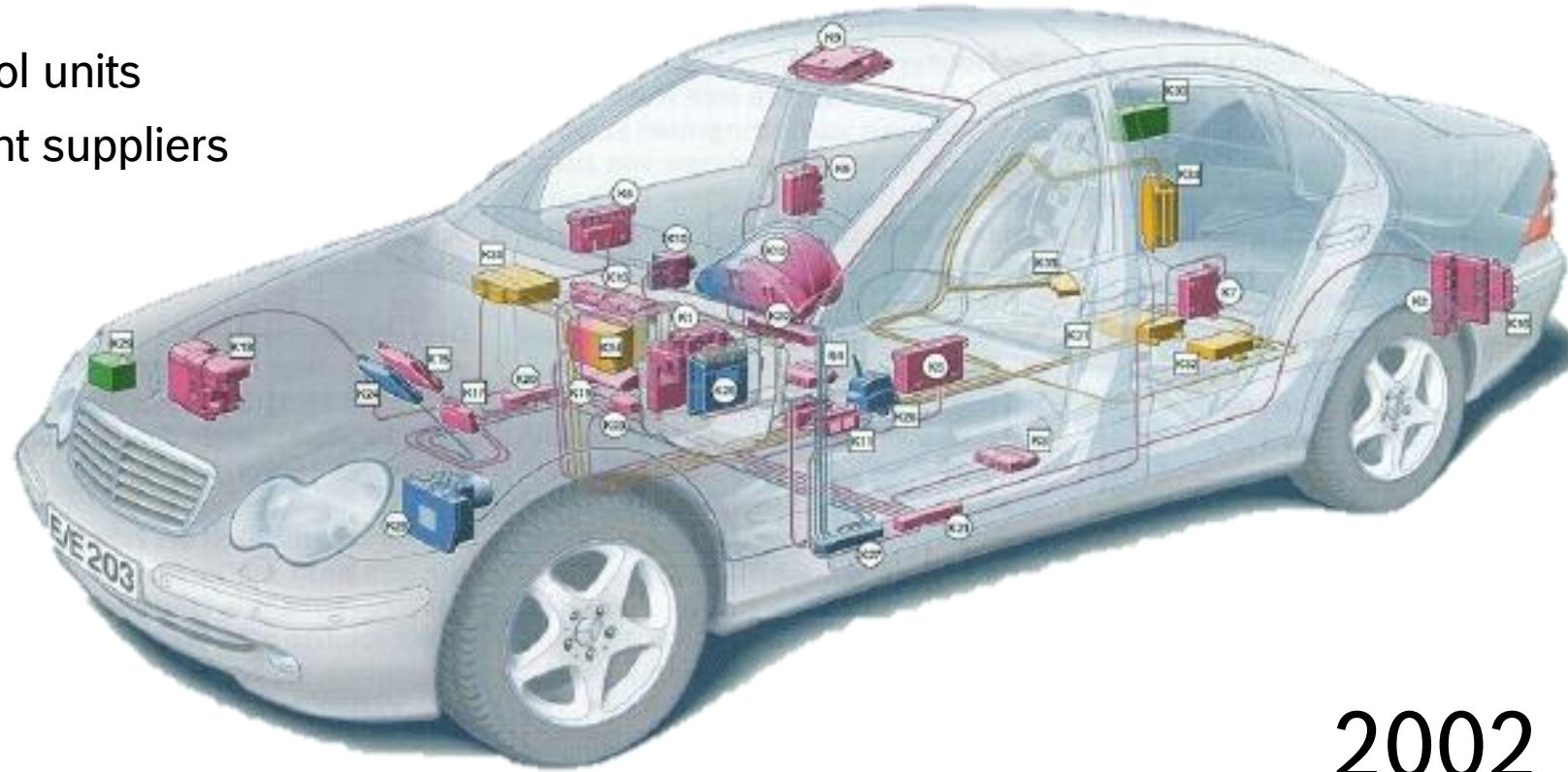


**Reliable Distributed
Systems**

Centralized E/E Architectures

How it always was...

- ▶ Up to 100 electronic control units
- ▶ ECUs delivered by different suppliers
- ▶ Some SW sharing
- ▶ Mainly integration on network level

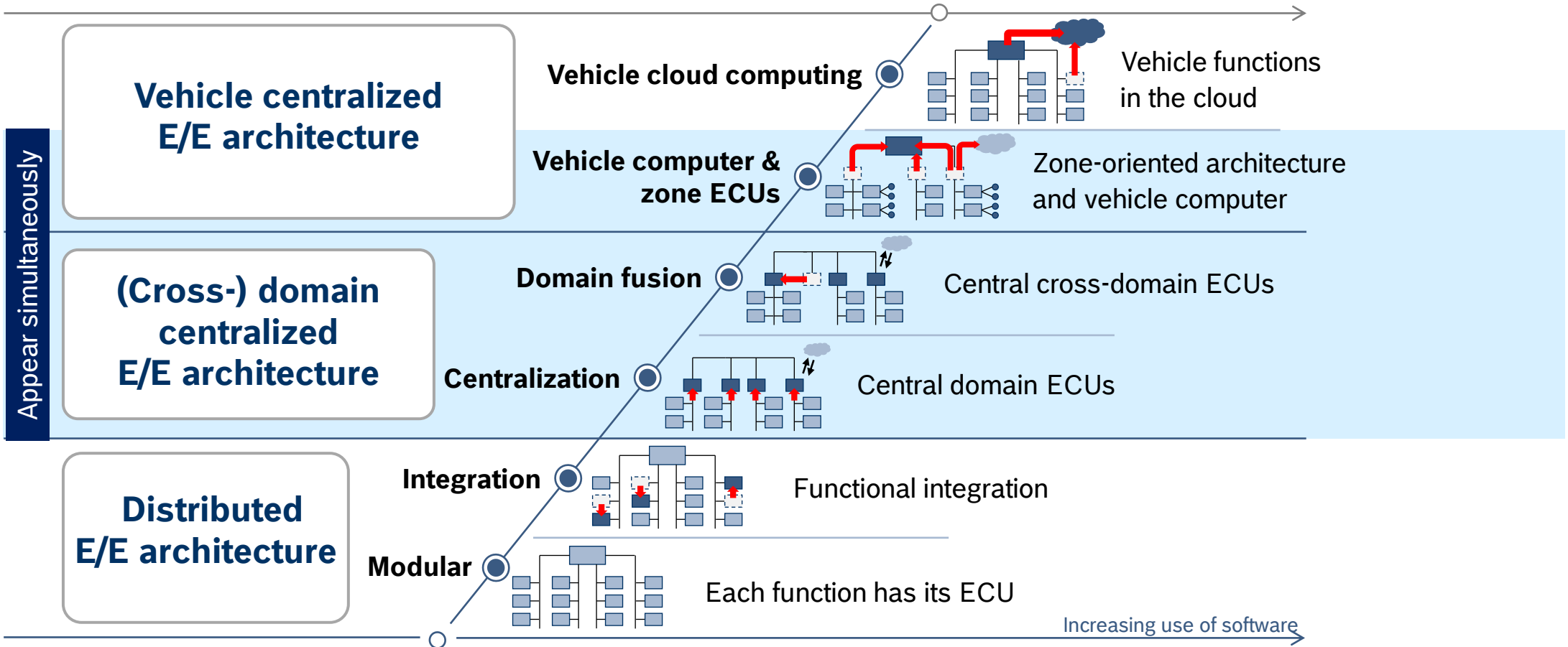


2002

OEMs: “ We will reduce the number of ECUs significantly”

Centralized E/E Architectures

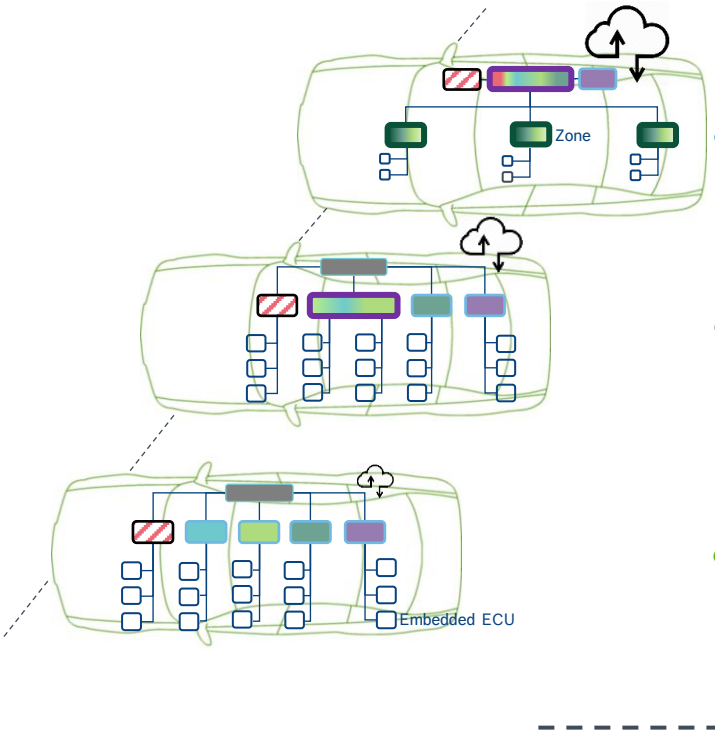
...but today not anymore



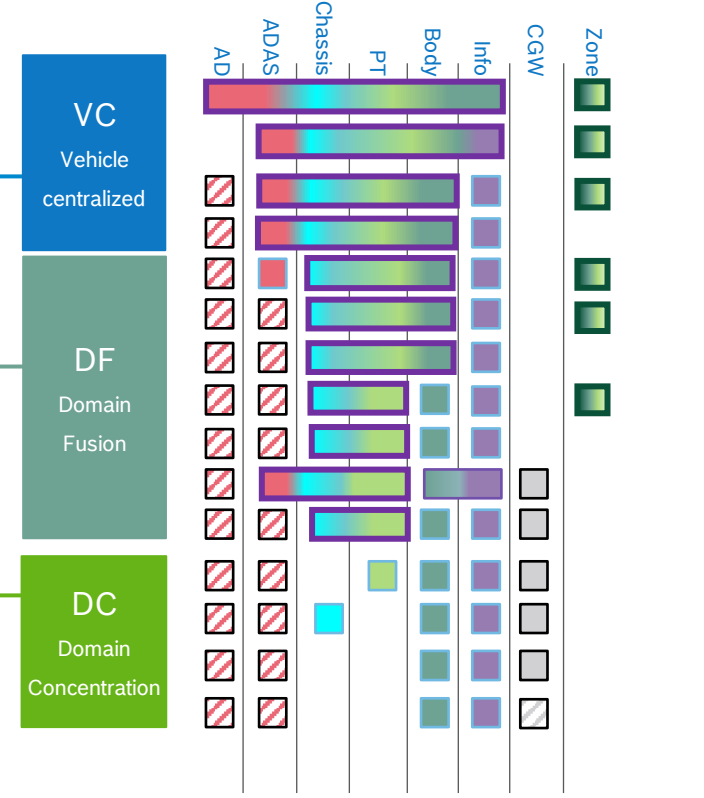
Centralized E/E Architectures

Many OEMs, Even More E/E Architectures...

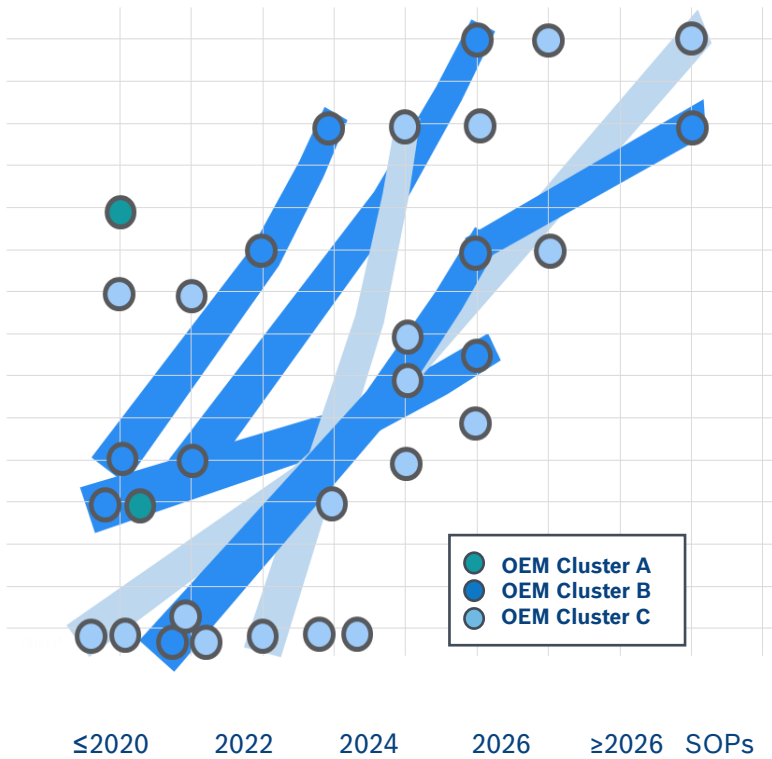
E/E Evolution



E/E Patterns



OEM Evolution / Revolution hikes



Centralized E/E Architectures Advantages



Up to 10%
Cost savings



Up to 10%
material and weight savings
in the wiring harness

Up to 20%
fewer control units



Outline



**Centralized E/E
Architectures**



**Software-Defined
Vehicles**



**Reliable Distributed
Systems**

Software is eating the world – and cars are next on the menu!

300bn EUR market for Automotive SW & Services in 2030

60% of automotive value creation by software in the near future



Software-Defined Vehicles

Software is still often perceived as problem...

Volkswagen Golf Delay Attributed to Software Glitches, Internet Connectivity

Komplexe Programme überfordern Autobauer
Wie Alltags-Software Menschenleben gefährden kann

News
Tesla Model 3 zerlegt: Elektronik 6 Jahre weiter als VW und Toyota

TRENDS
Increased Software Complexity Delays Auto Products

Feb. 11, 2020—McKinsey & Company released a report that discovered the central reasons for automotive product-launch delays are the increased complexity of software and electronics and an approach to software development that fails to keep up with growing system-level complexity.

FORD RECALLS MORE THAN 430,000 VEHICLES DUE TO SOFTWARE DEFECT

REPORT
Volkswagen ID.3 reportedly suffering software problems
Automaker plans to fix the first 20,000 cars with manual updates before delivery

Software-Defined Vehicles Dealing with complexity



18.02.2021 Press release | #Connected mobility

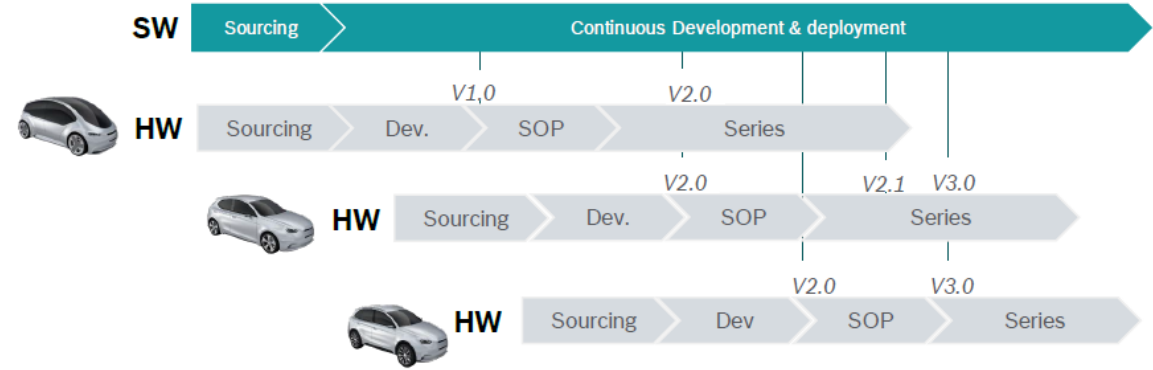
Bosch teams up with Microsoft to develop software-defined vehicle platform for seamless integration between cars and cloud



! No re-use of SW



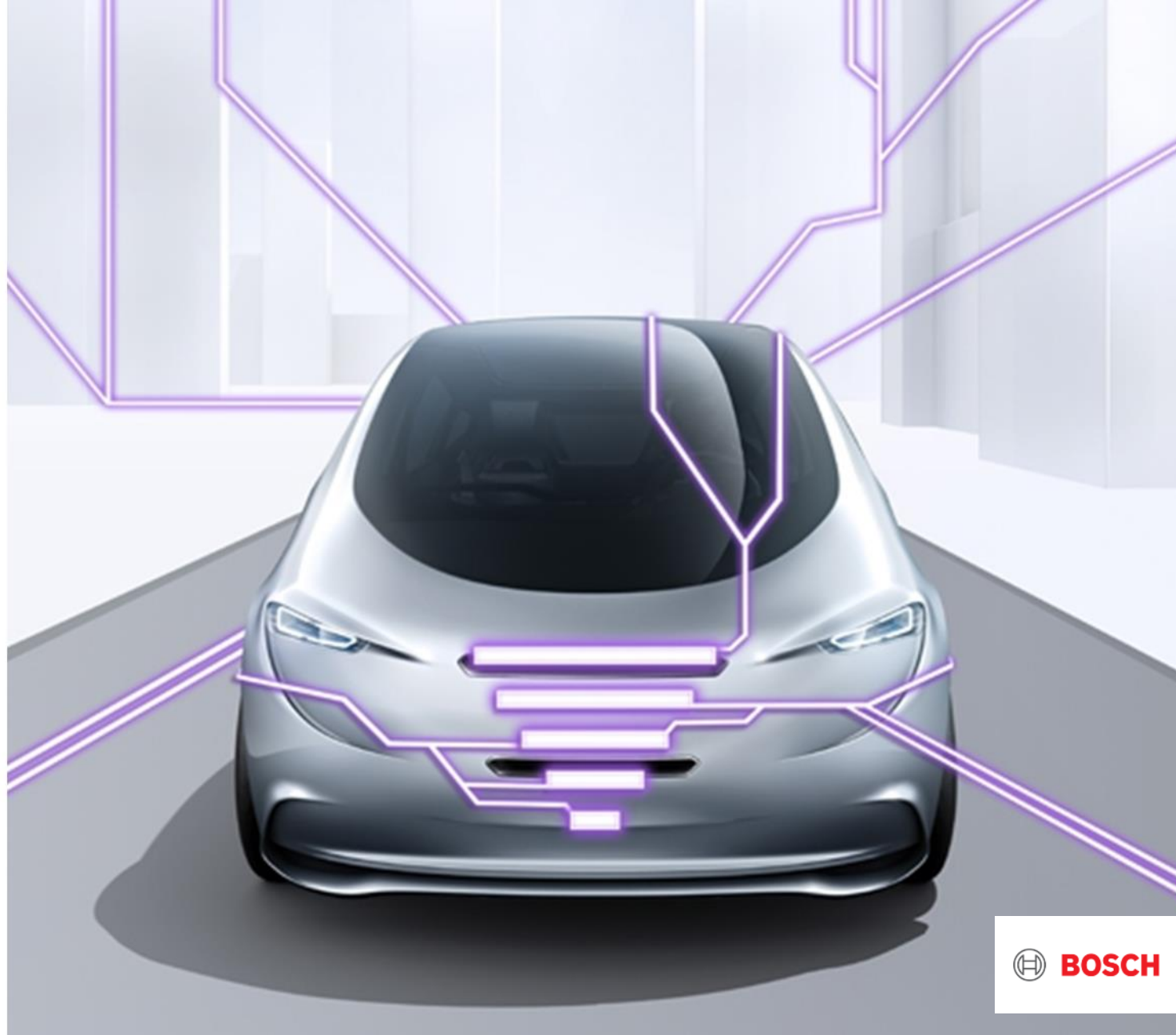
! No re-use of SW



Decoupling of SW and HW (and their development cycles)

WHAT IF....

...we reimagine the vehicle as part of a digital Fabric?



Outline



**Centralized E/E
Architectures**

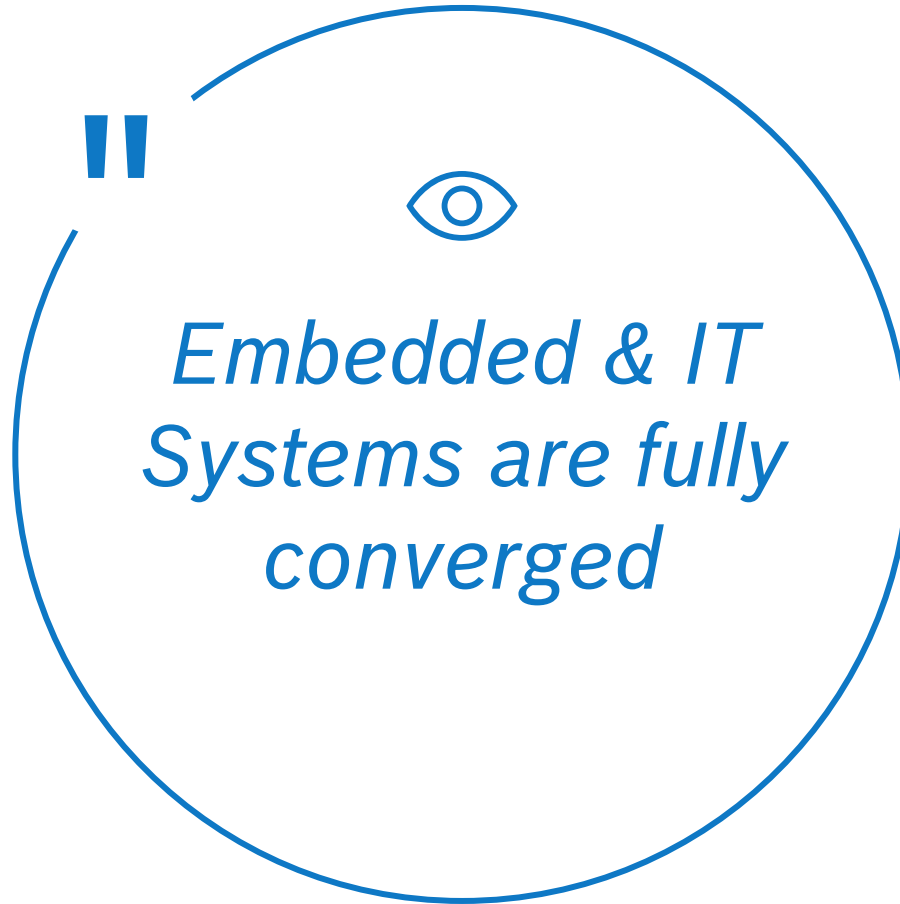


**Software-Defined
Vehicles**



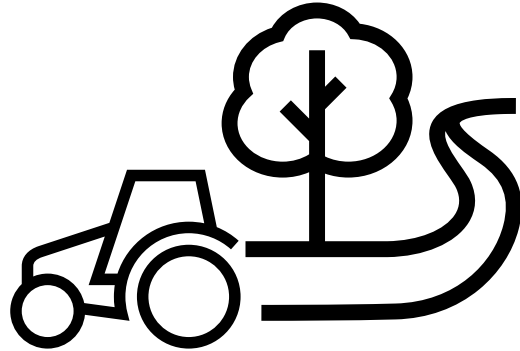
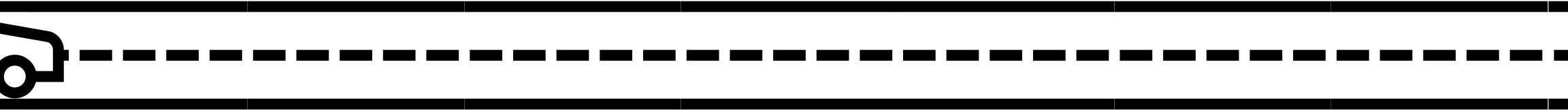
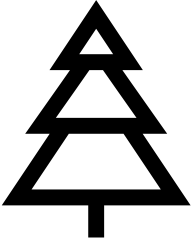
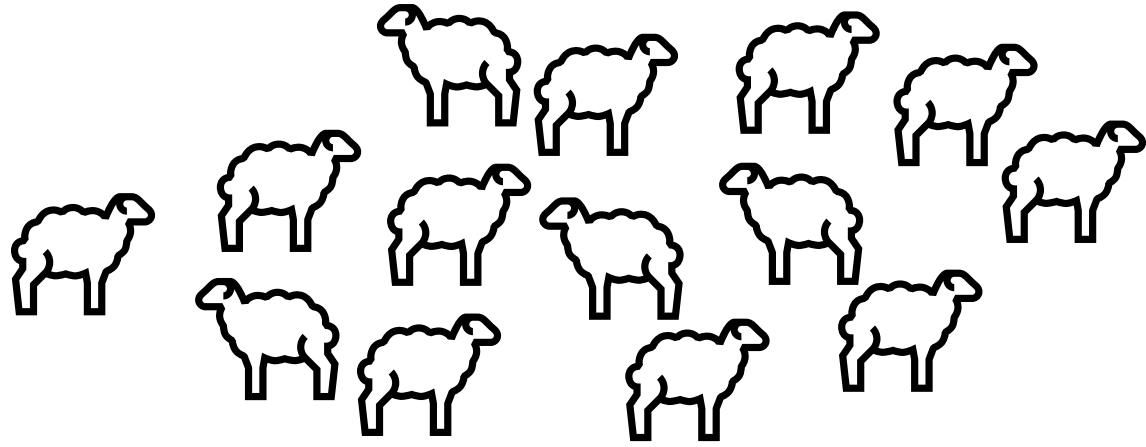
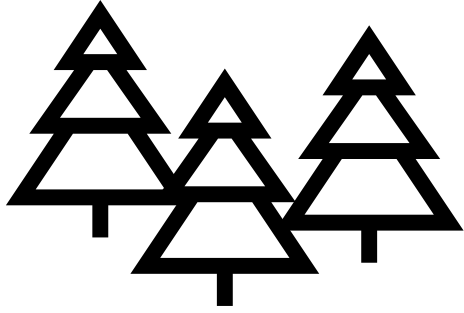
**Reliable Distributed
Systems**

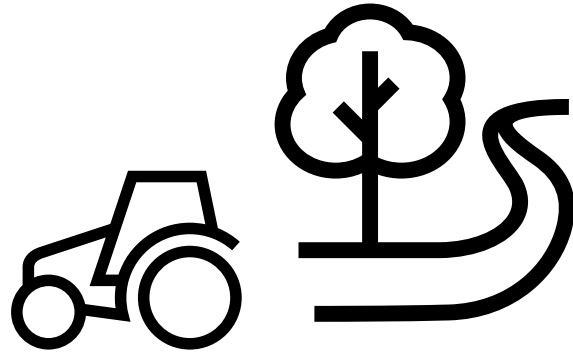
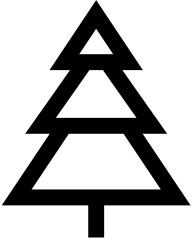
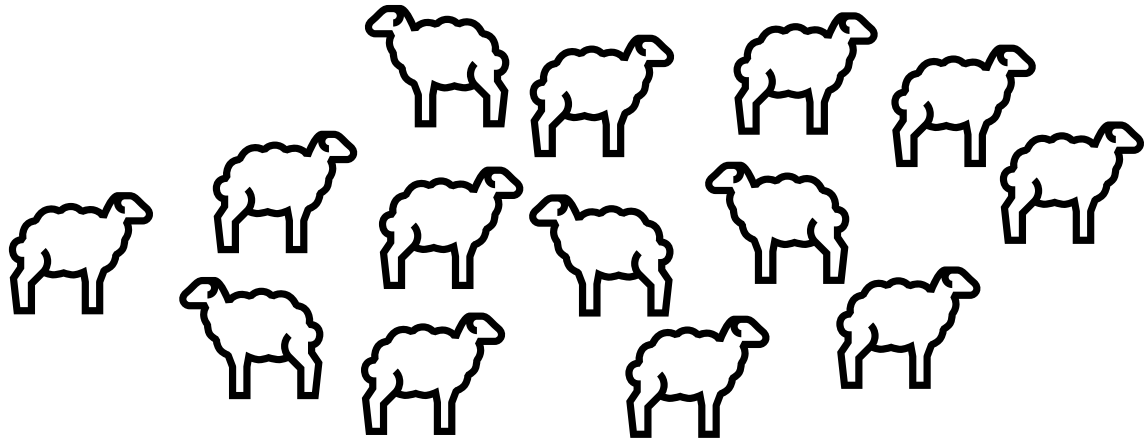
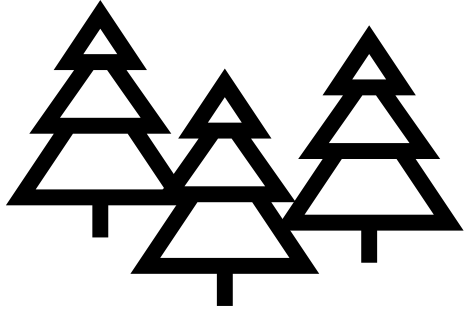
Reliable Distributed Systems: Vision

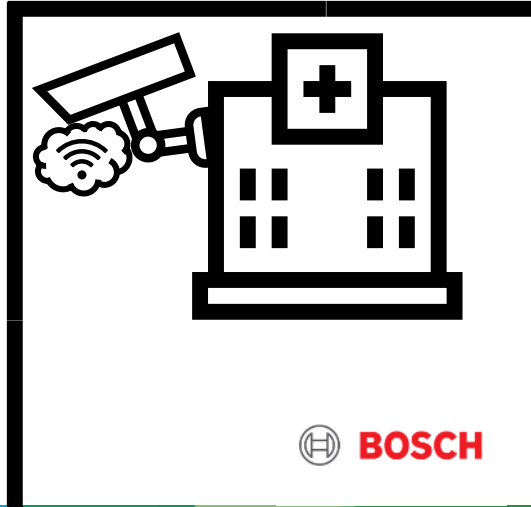
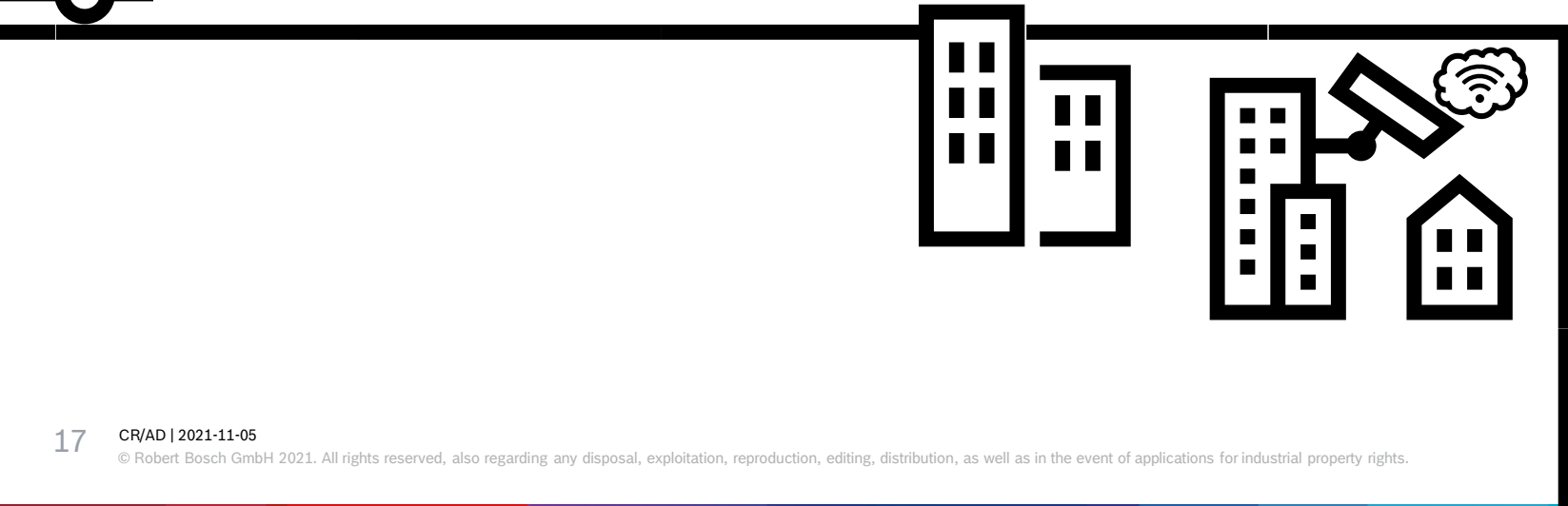
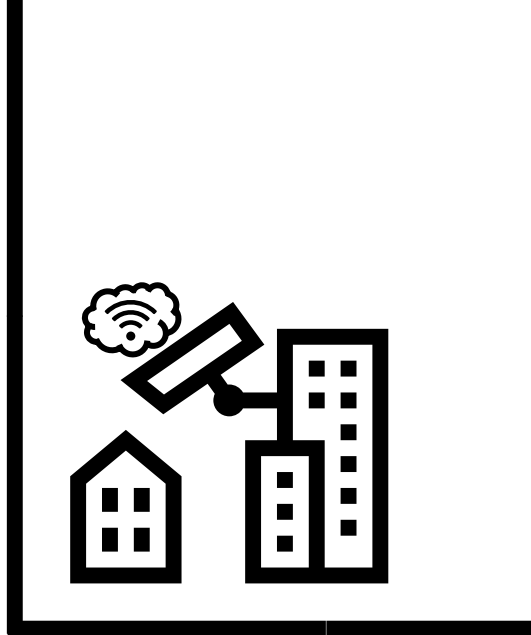
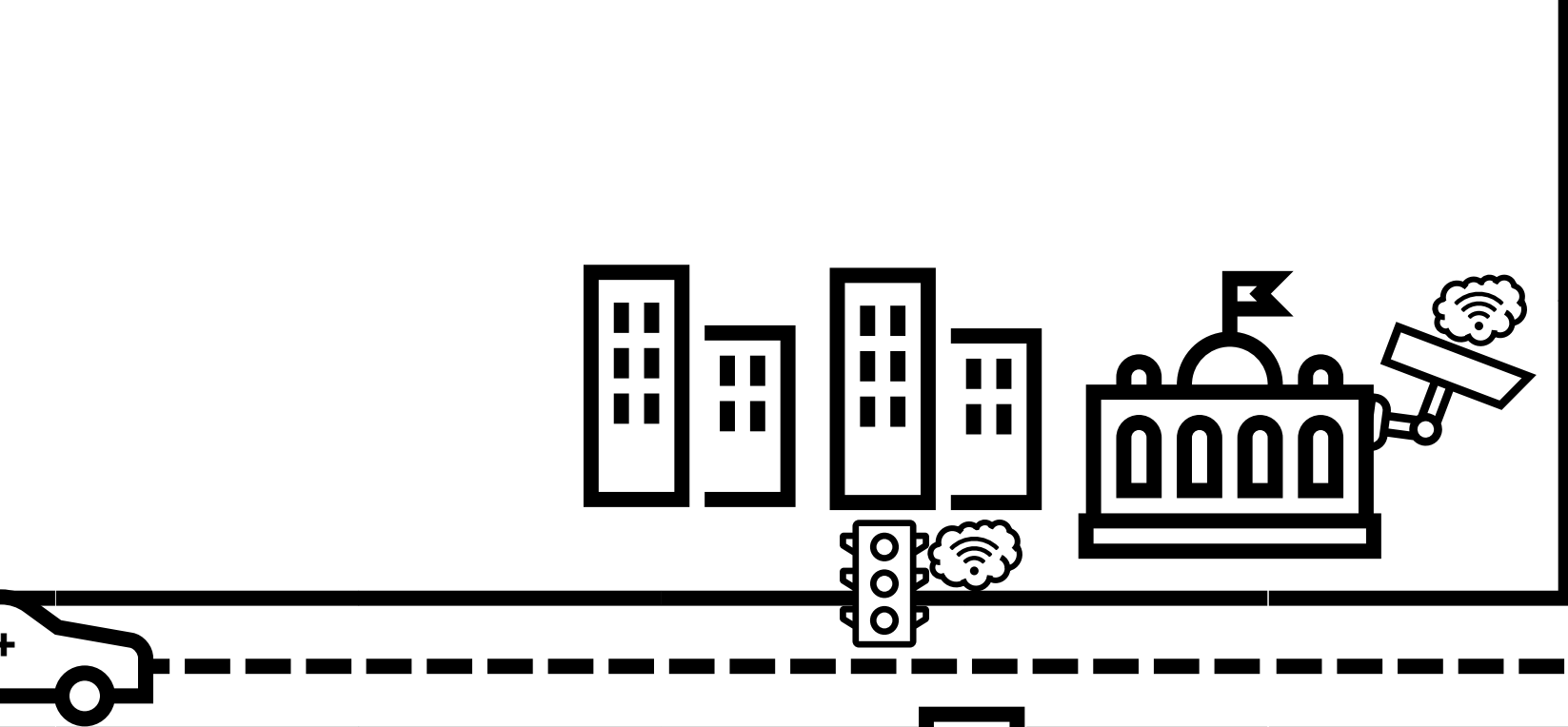


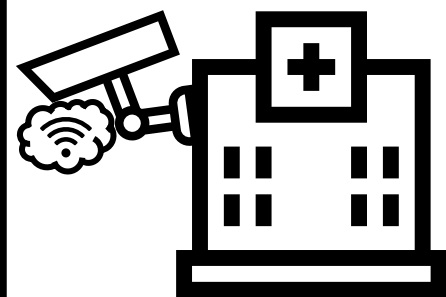
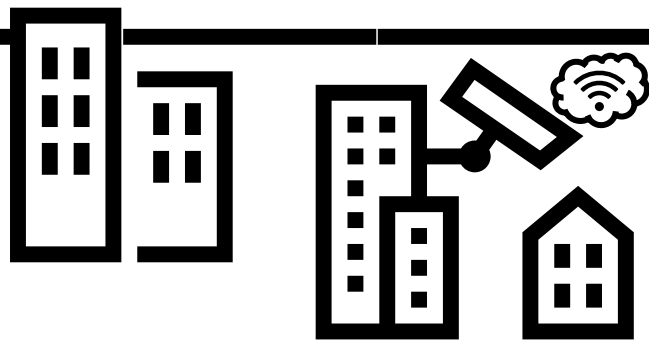
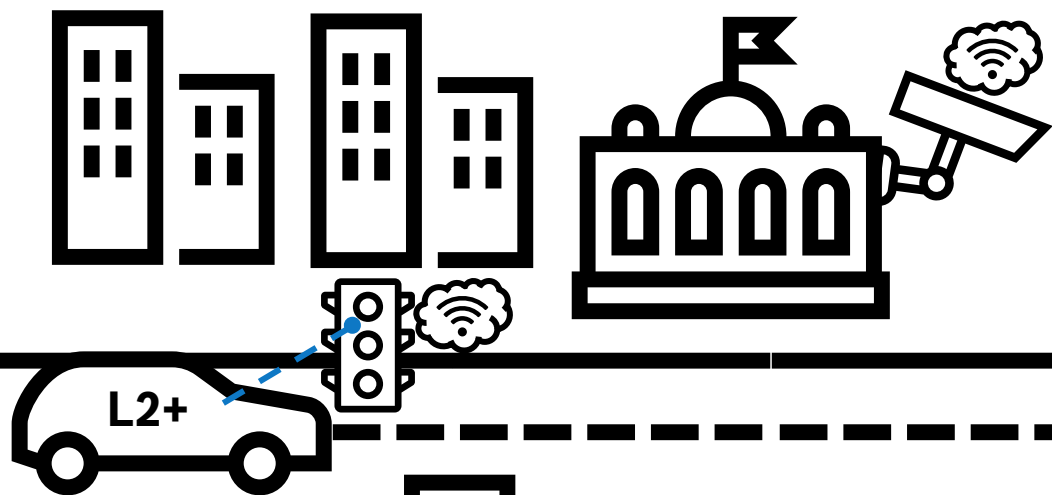
Reliable Distributed Systems: Example

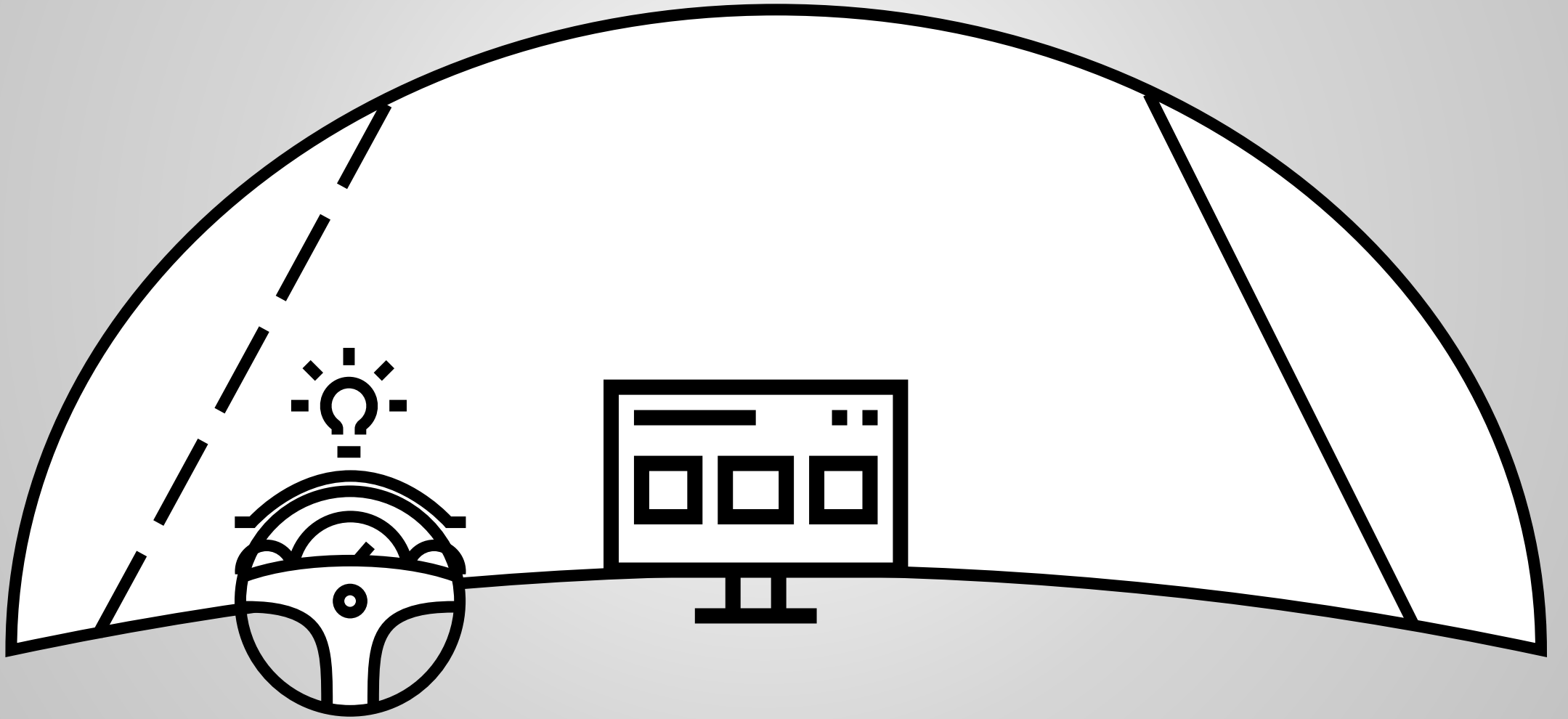












IAD Available

Bosch can drive your car from here

Would you like to book an IAD day pass?

Yes

No

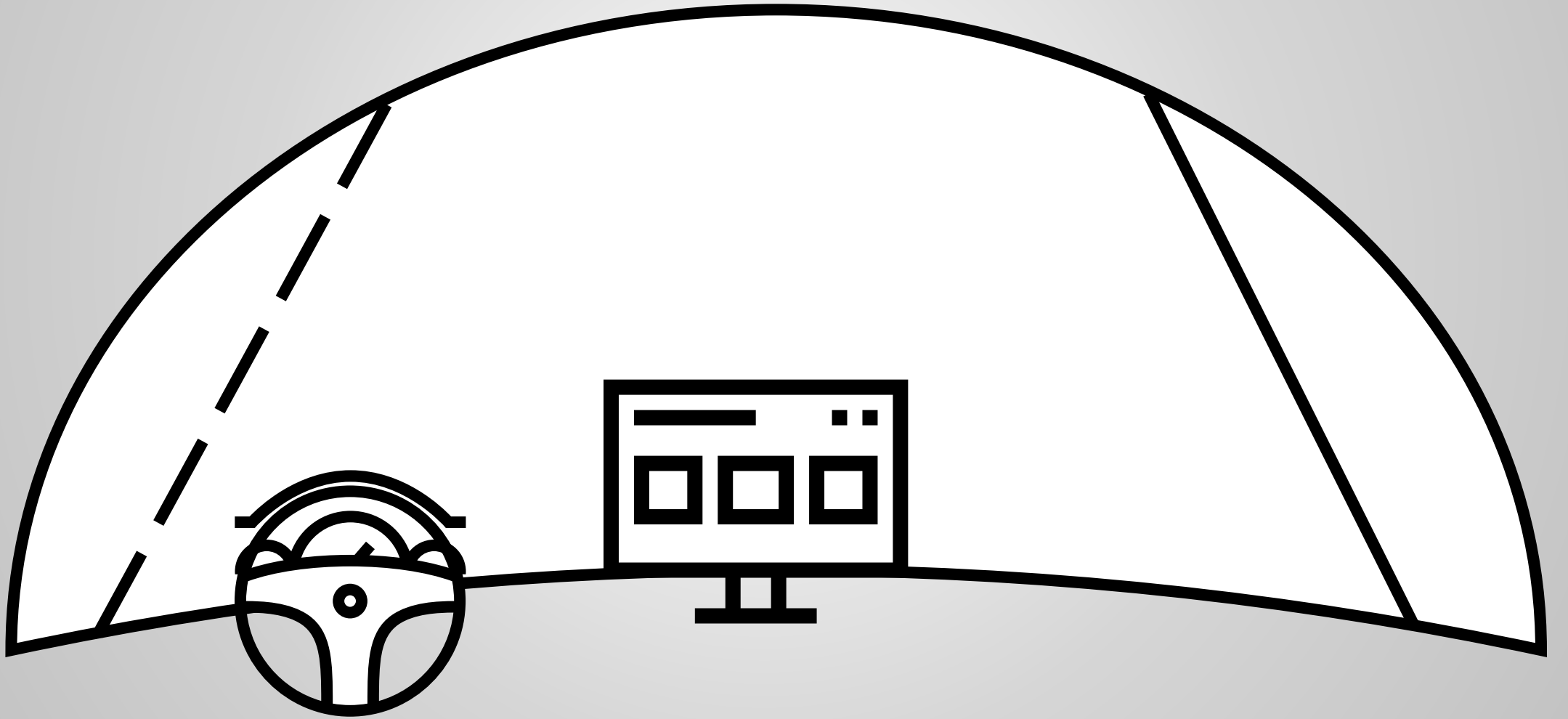
Always

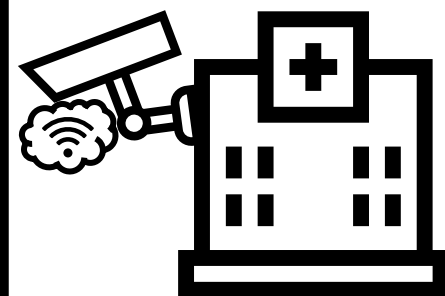
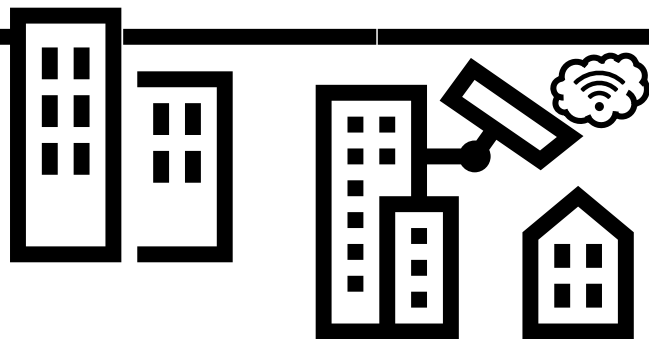
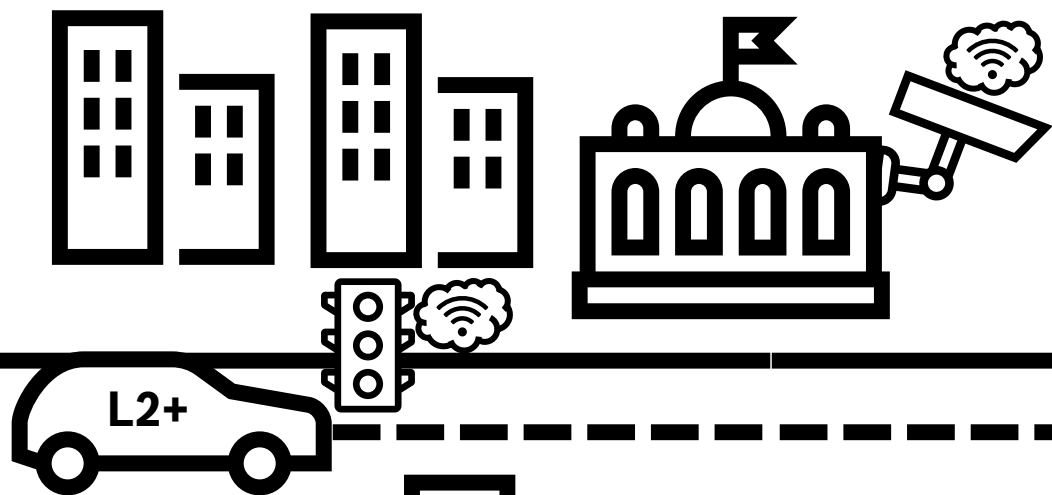
IAD Available

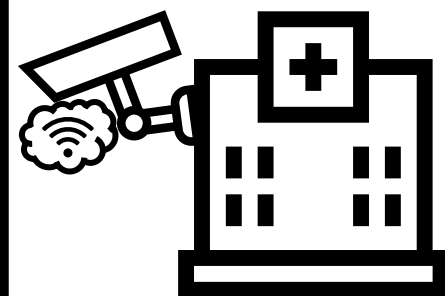
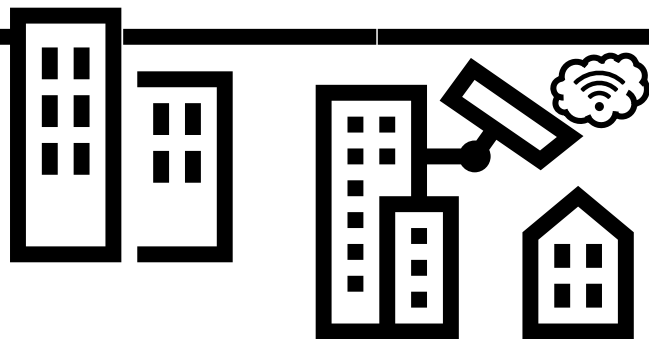
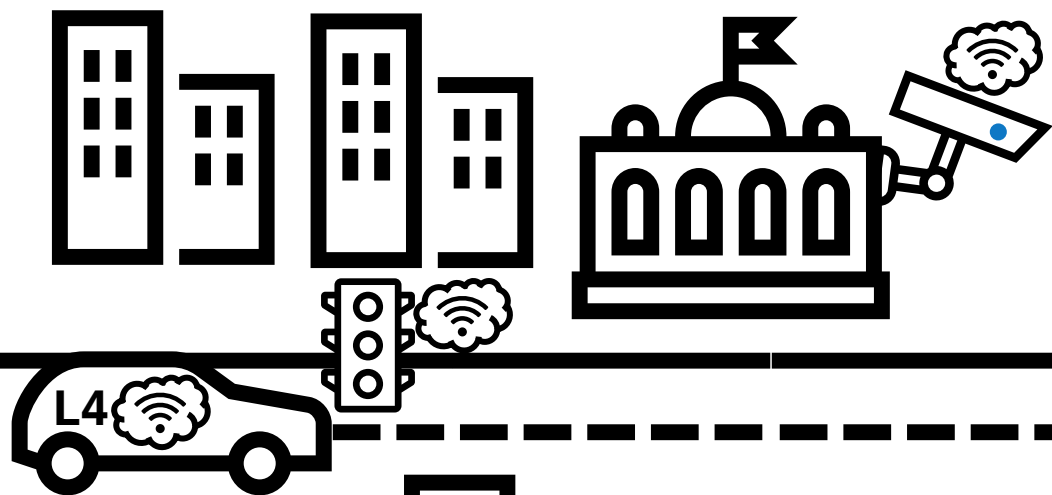
Bosch can drive your car from here

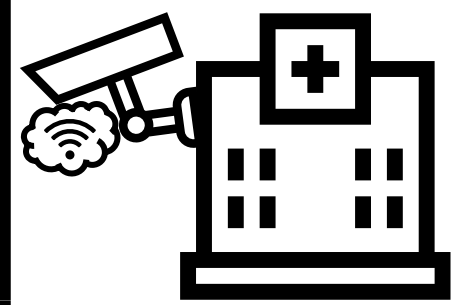
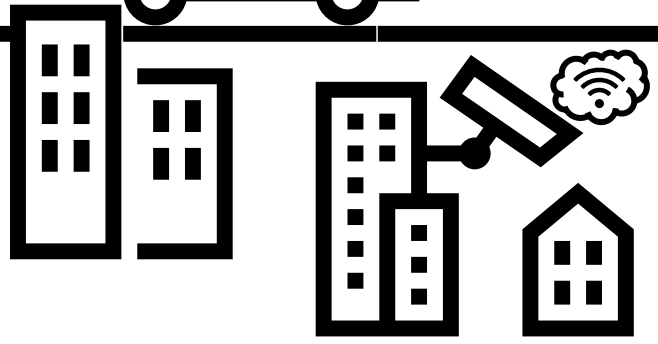
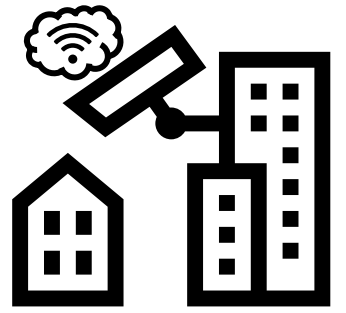
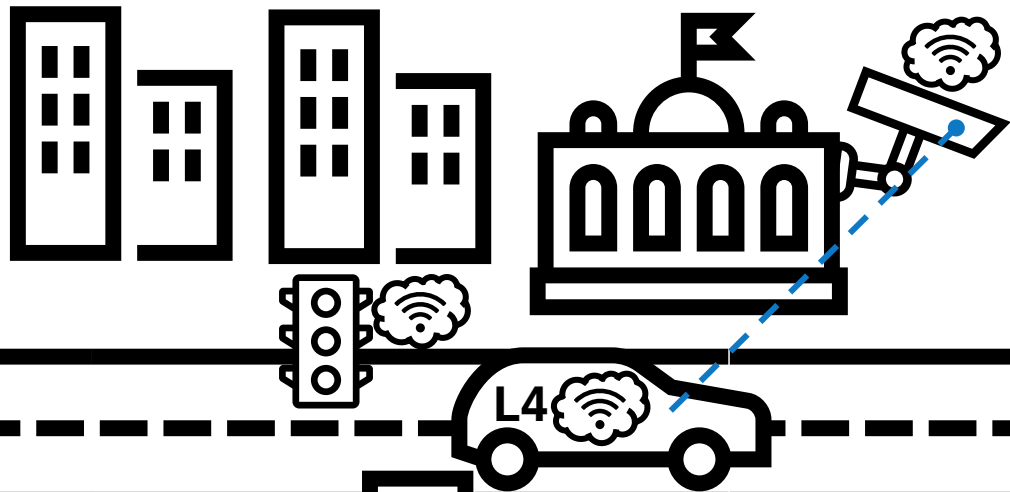
Would you like to book an IAD day pass?

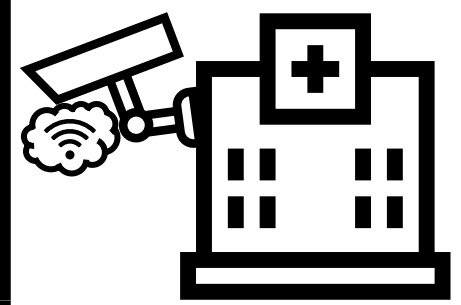
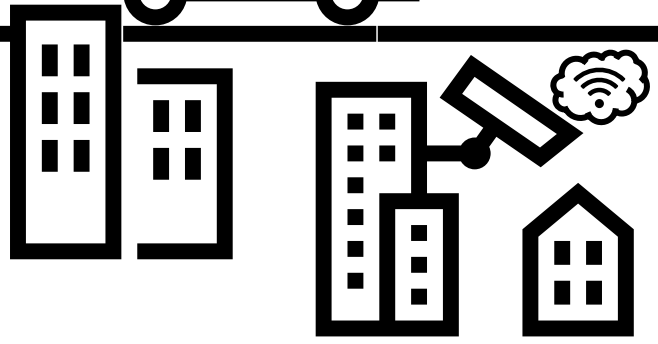
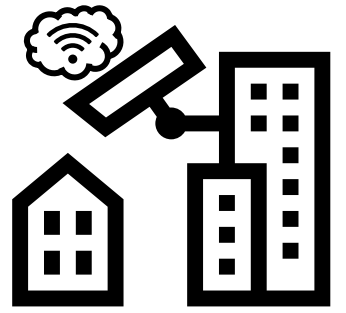
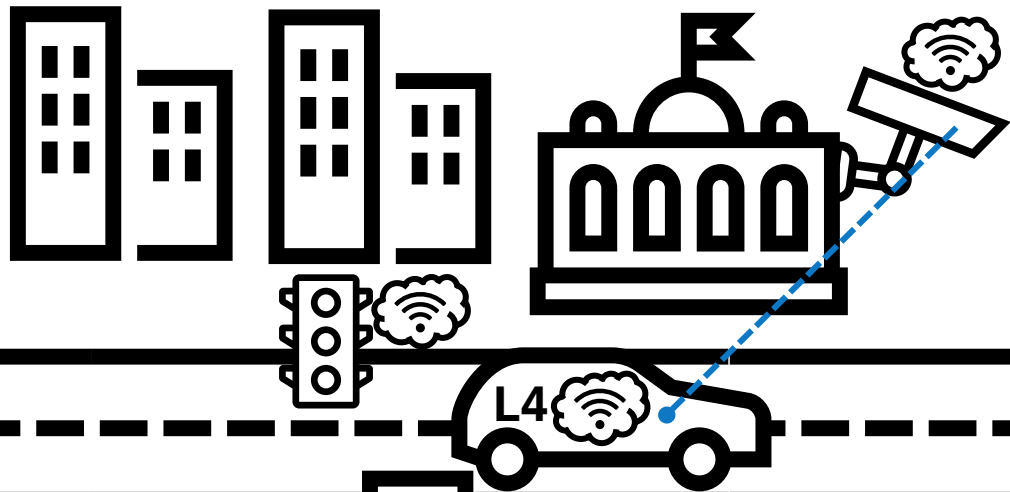
Yes

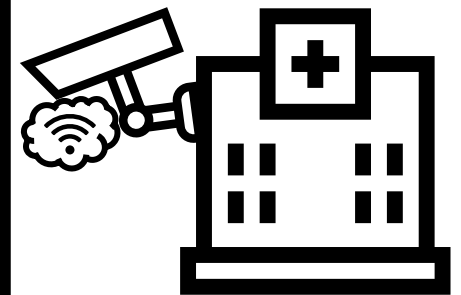
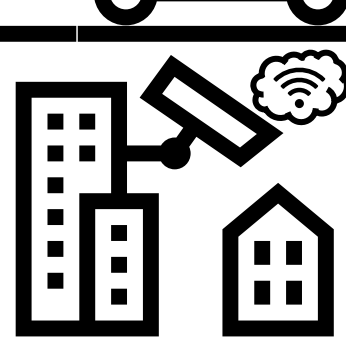
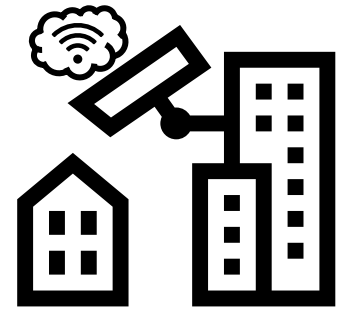
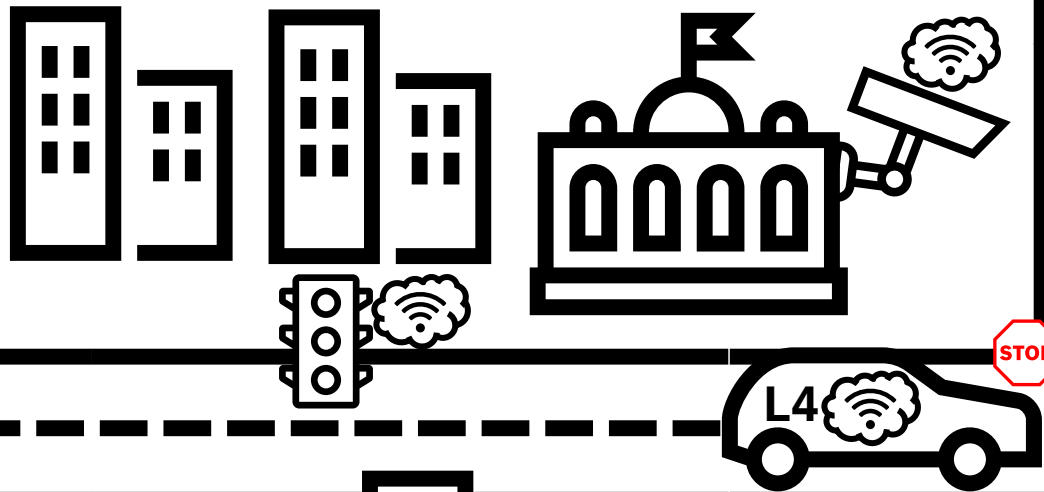


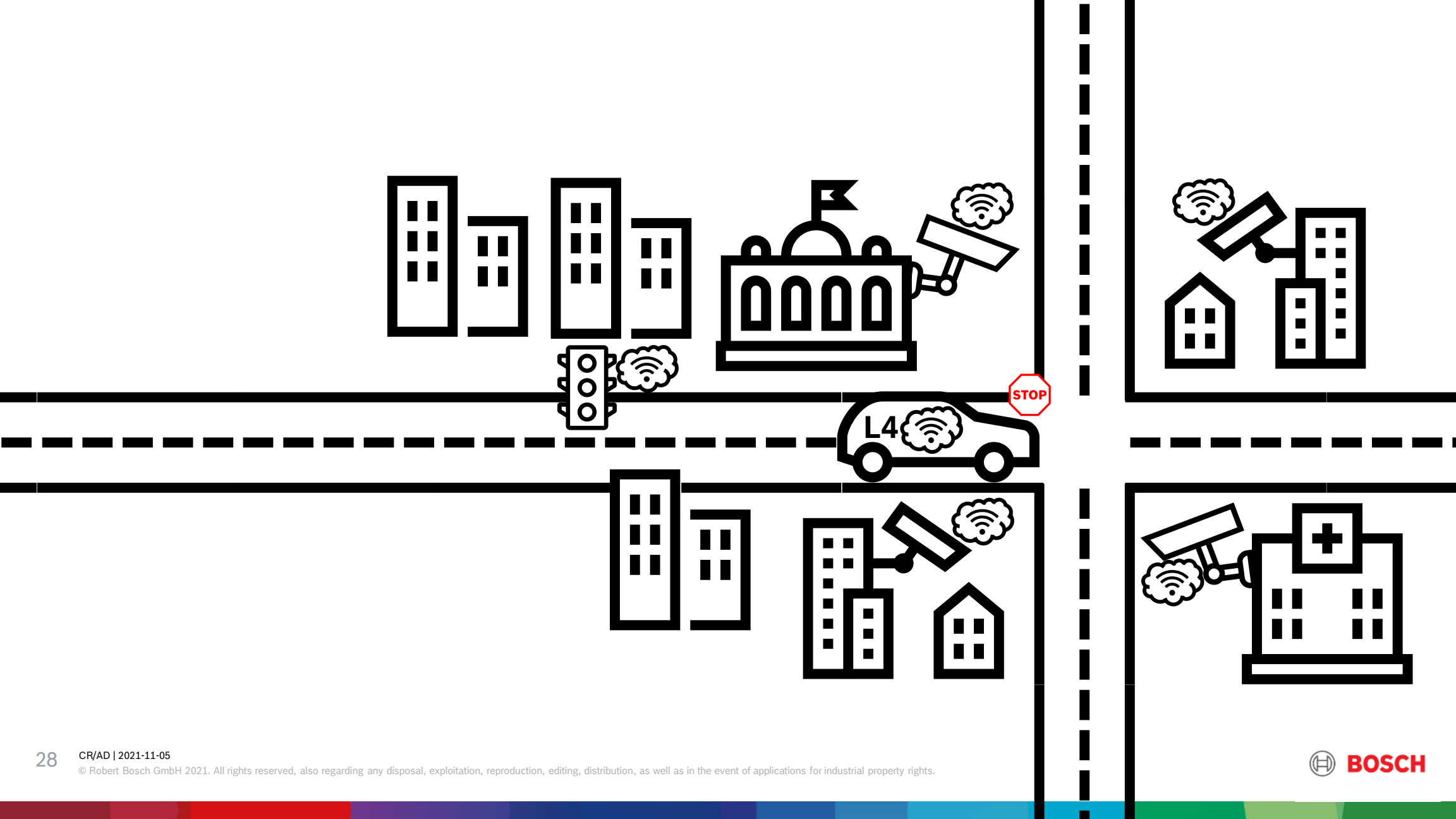


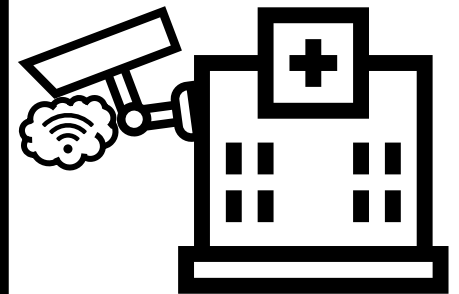
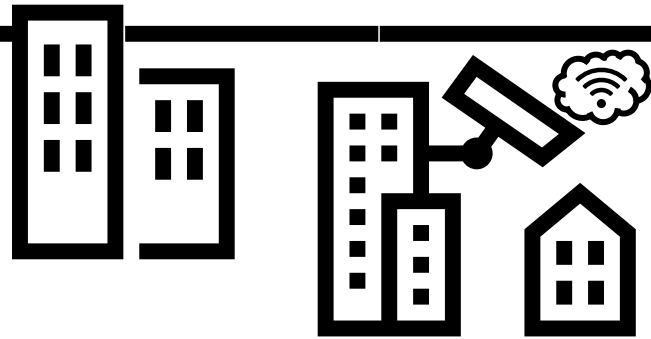
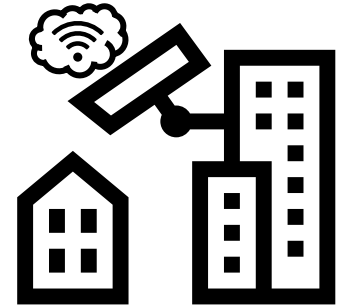
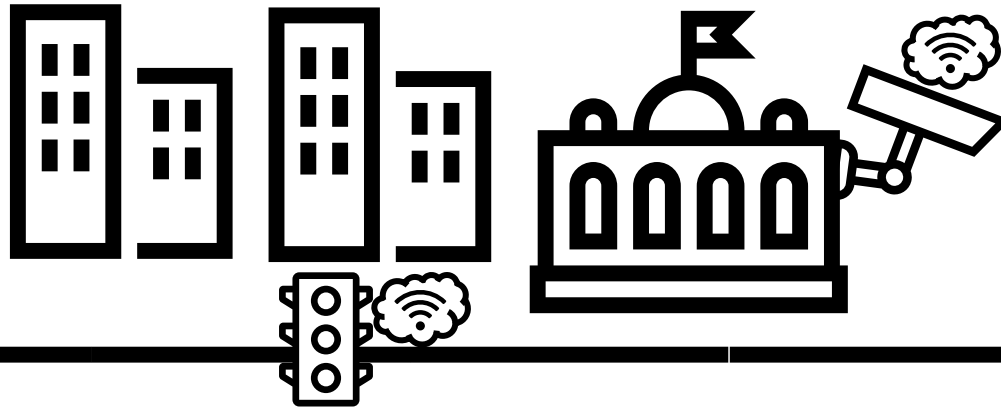






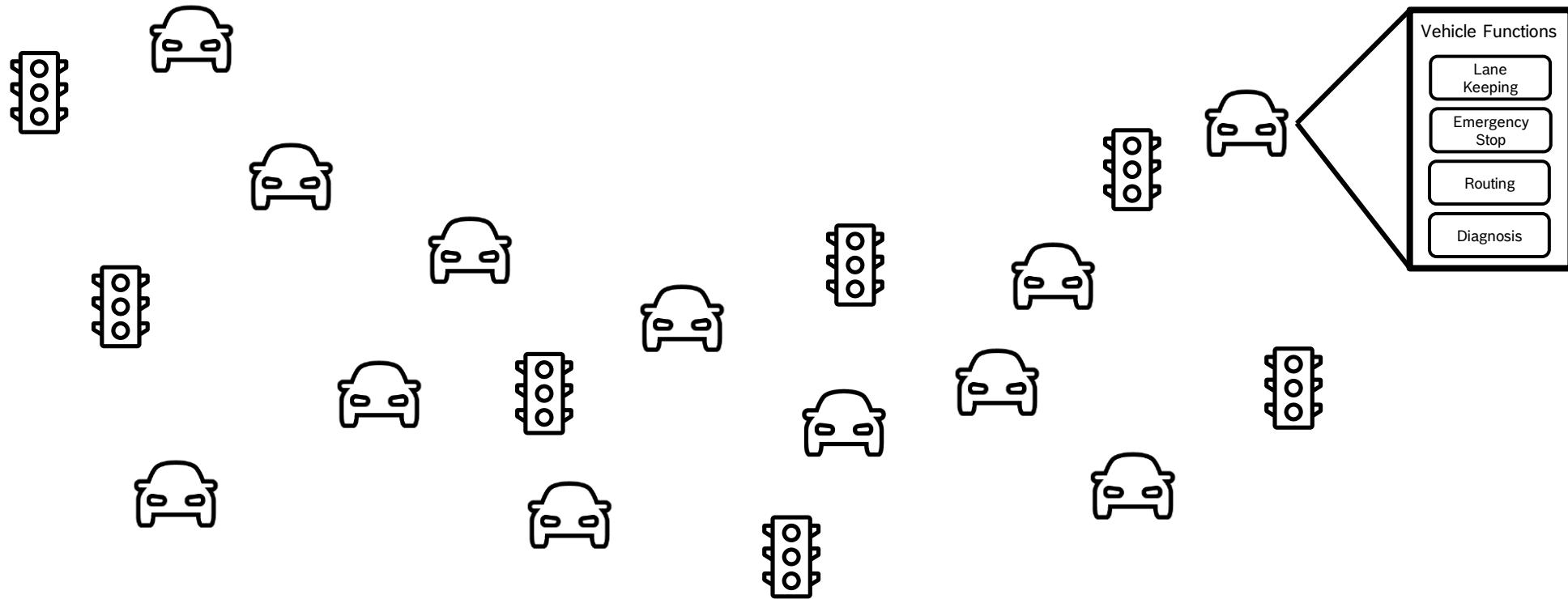






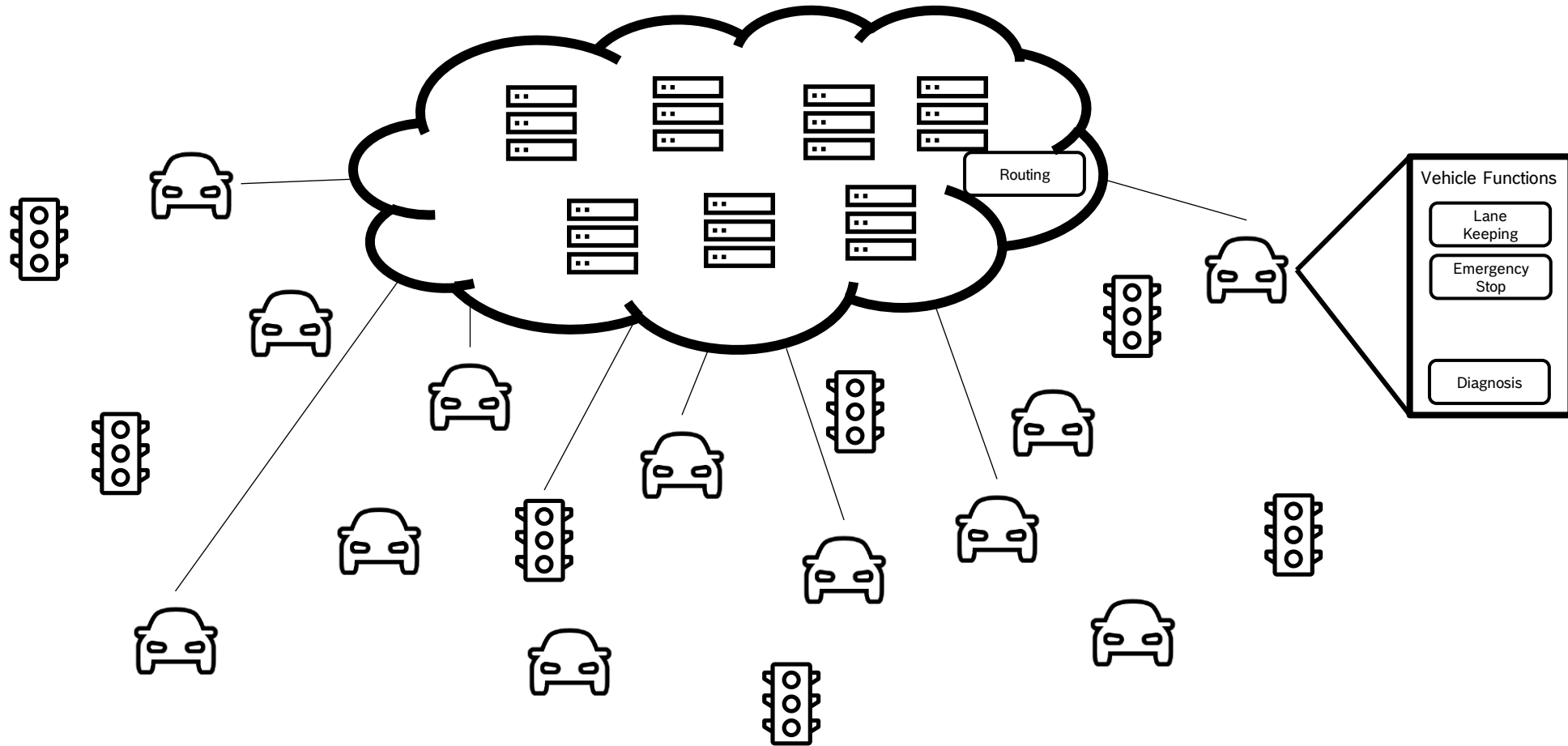
Reliable Distributed Systems (RDS)

Today



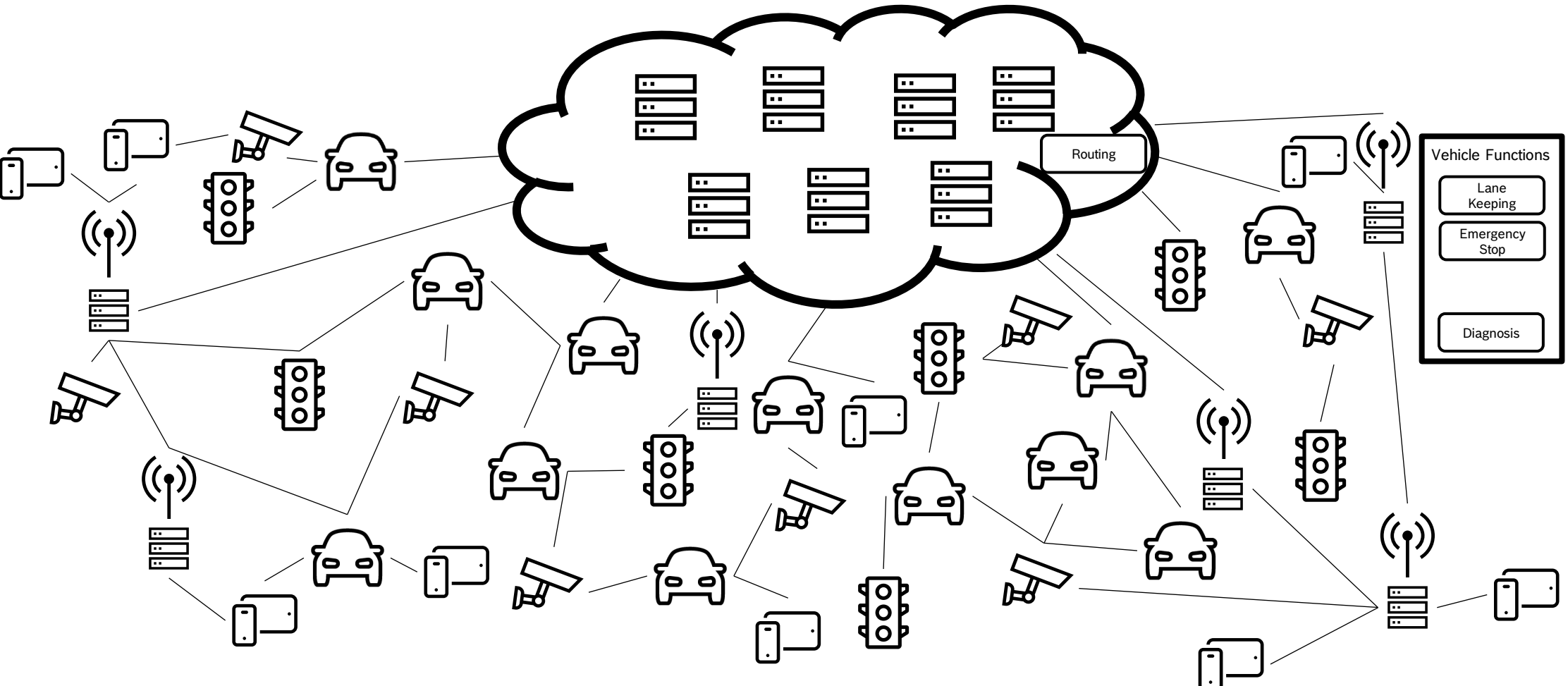
Reliable Distributed Systems (RDS)

Today



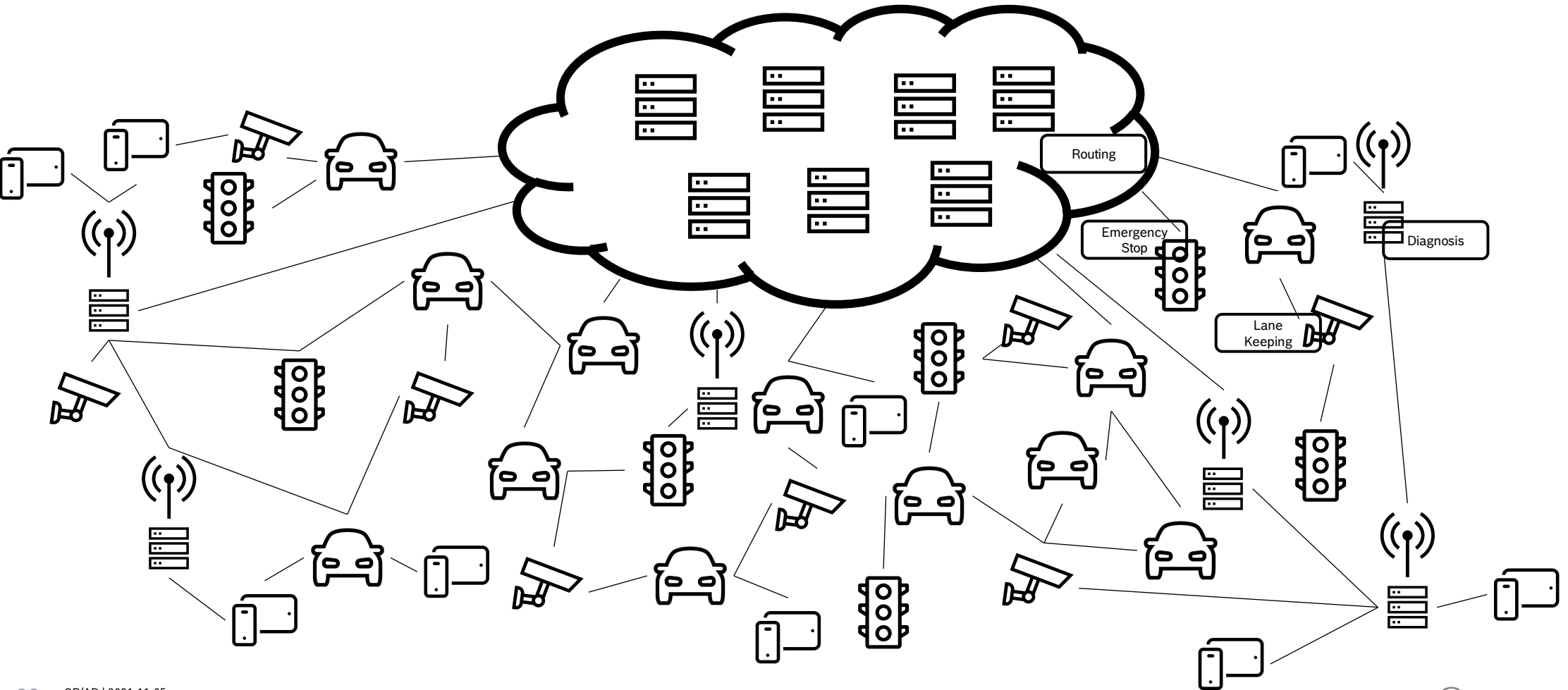
Reliable Distributed Systems (RDS)

The Fabric



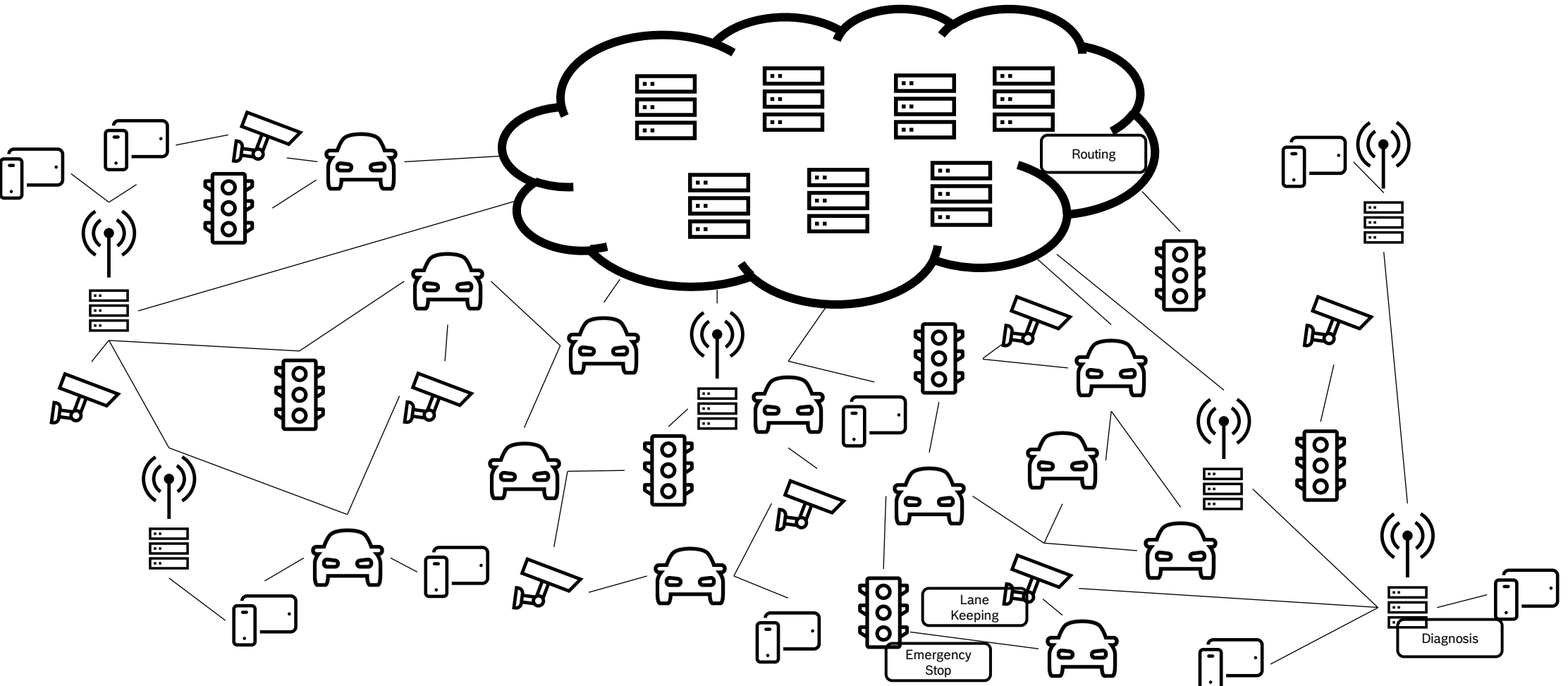
Reliable Distributed Systems (RDS)

The Fabric



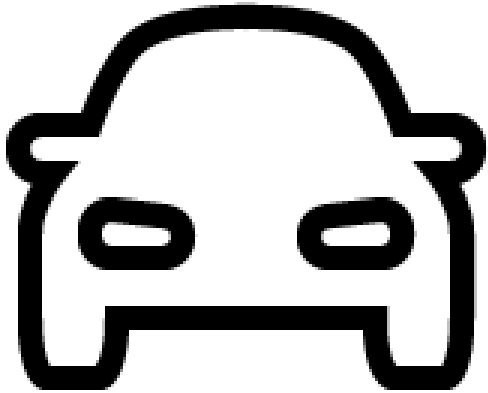
Reliable Distributed Systems (RDS)

The Fabric

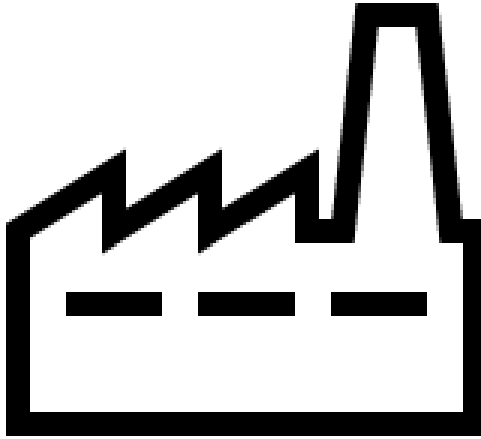


Reliable Distributed Systems (RDS)

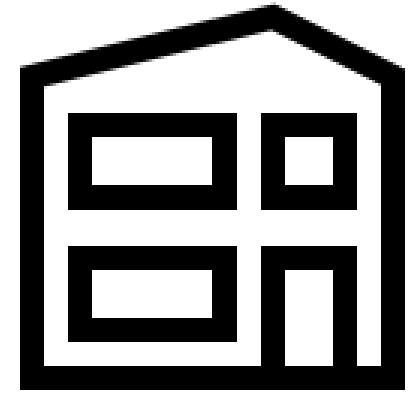
RDS spans multiple domains



Mobility

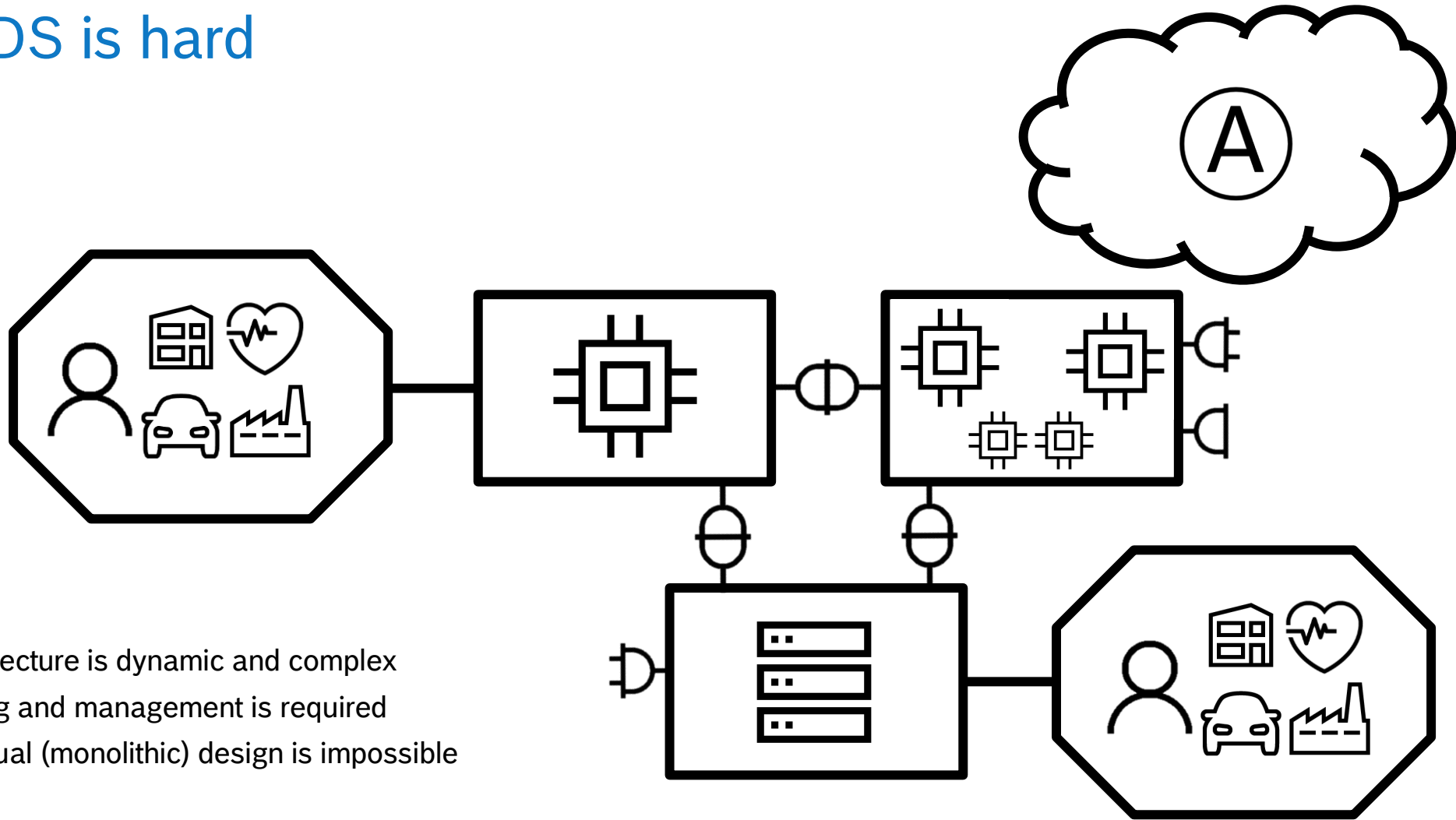


Manufacturing



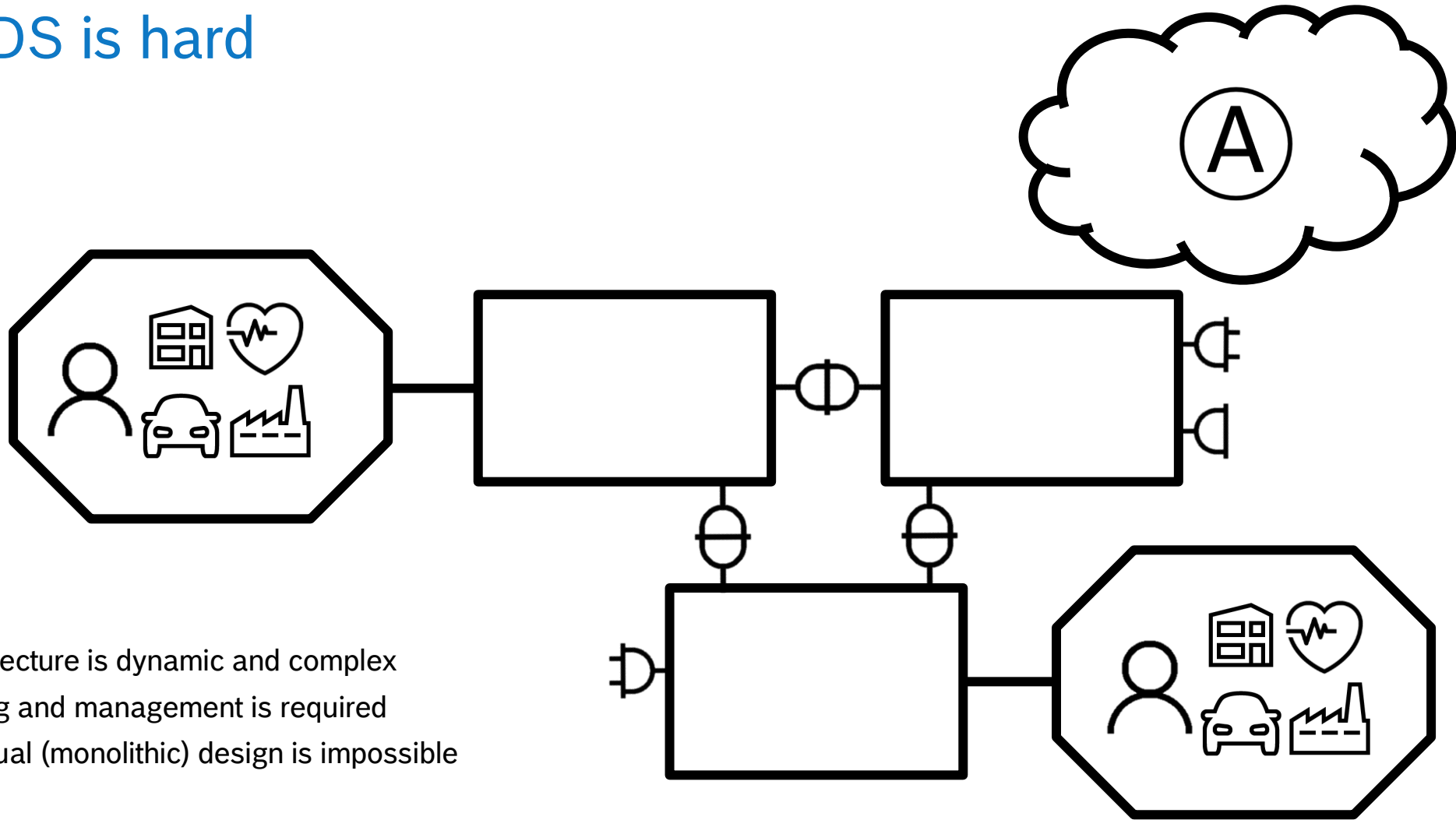
Building
Technology

Building RDS is hard



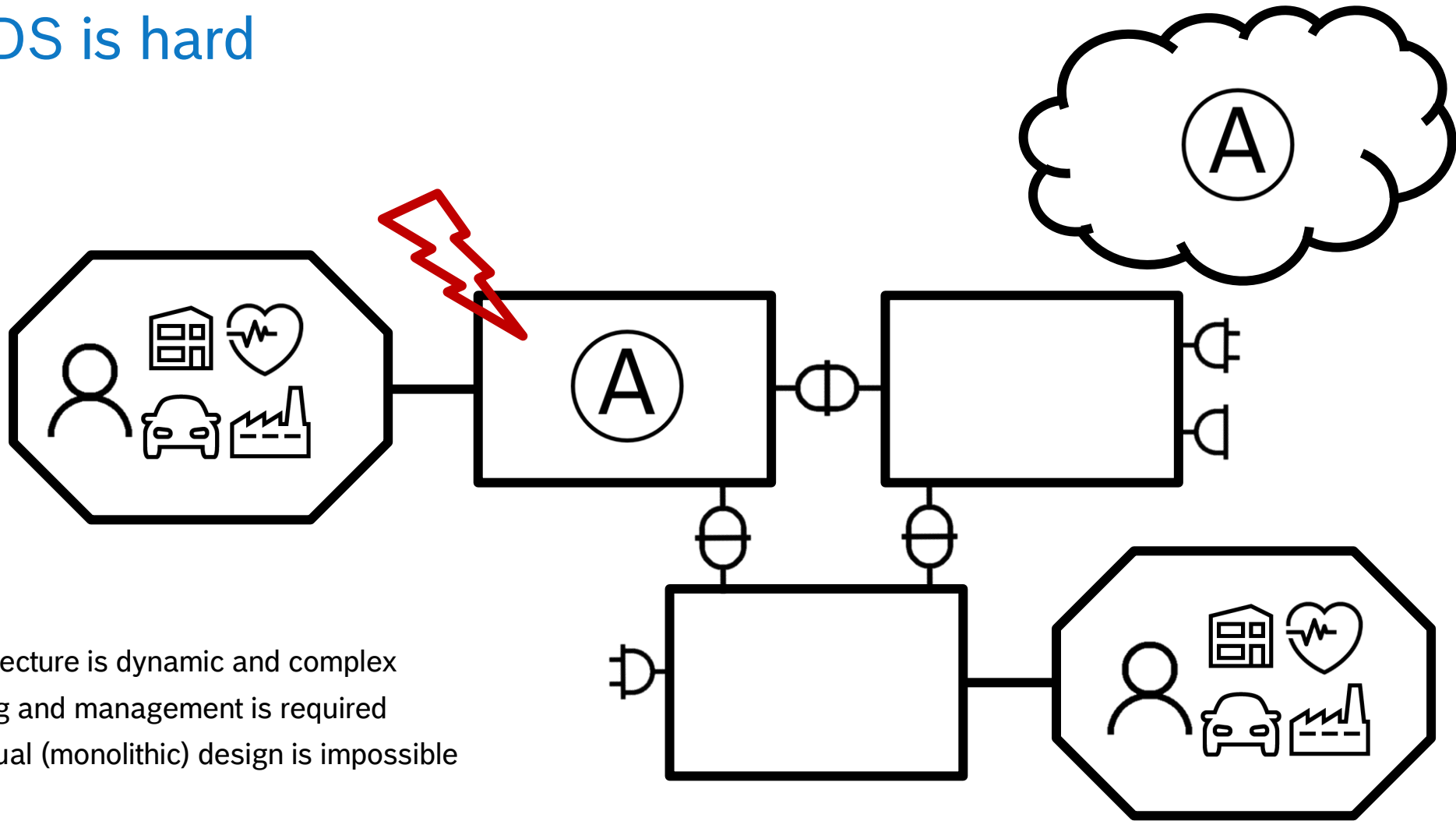
- ▶ RDS system architecture is dynamic and complex
- ▶ Runtime monitoring and management is required
- ▶ Static upfront manual (monolithic) design is impossible

Building RDS is hard



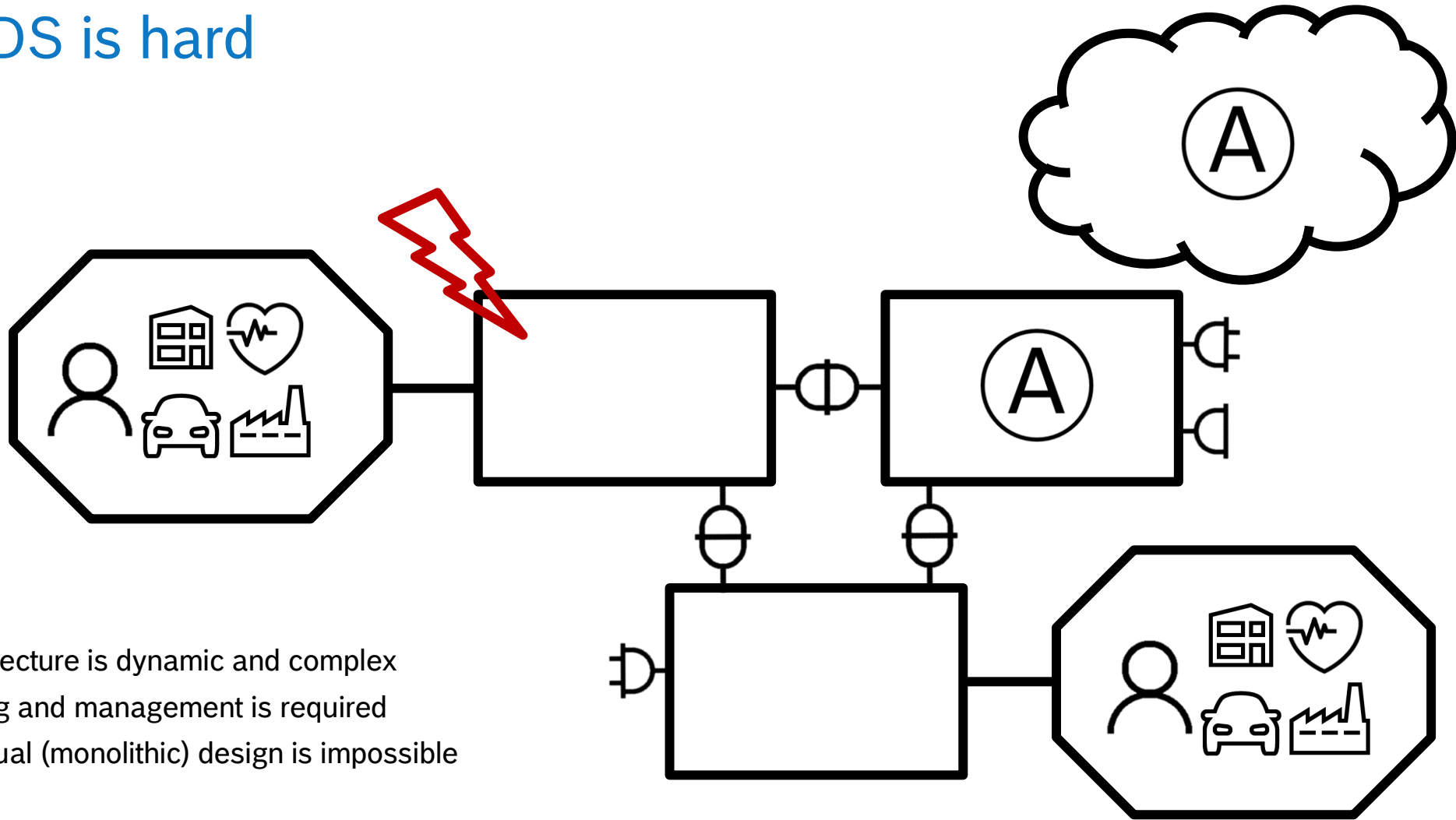
- ▶ RDS system architecture is dynamic and complex
- ▶ Runtime monitoring and management is required
- ▶ Static upfront manual (monolithic) design is impossible

Building RDS is hard



- ▶ RDS system architecture is dynamic and complex
- ▶ Runtime monitoring and management is required
- ▶ Static upfront manual (monolithic) design is impossible

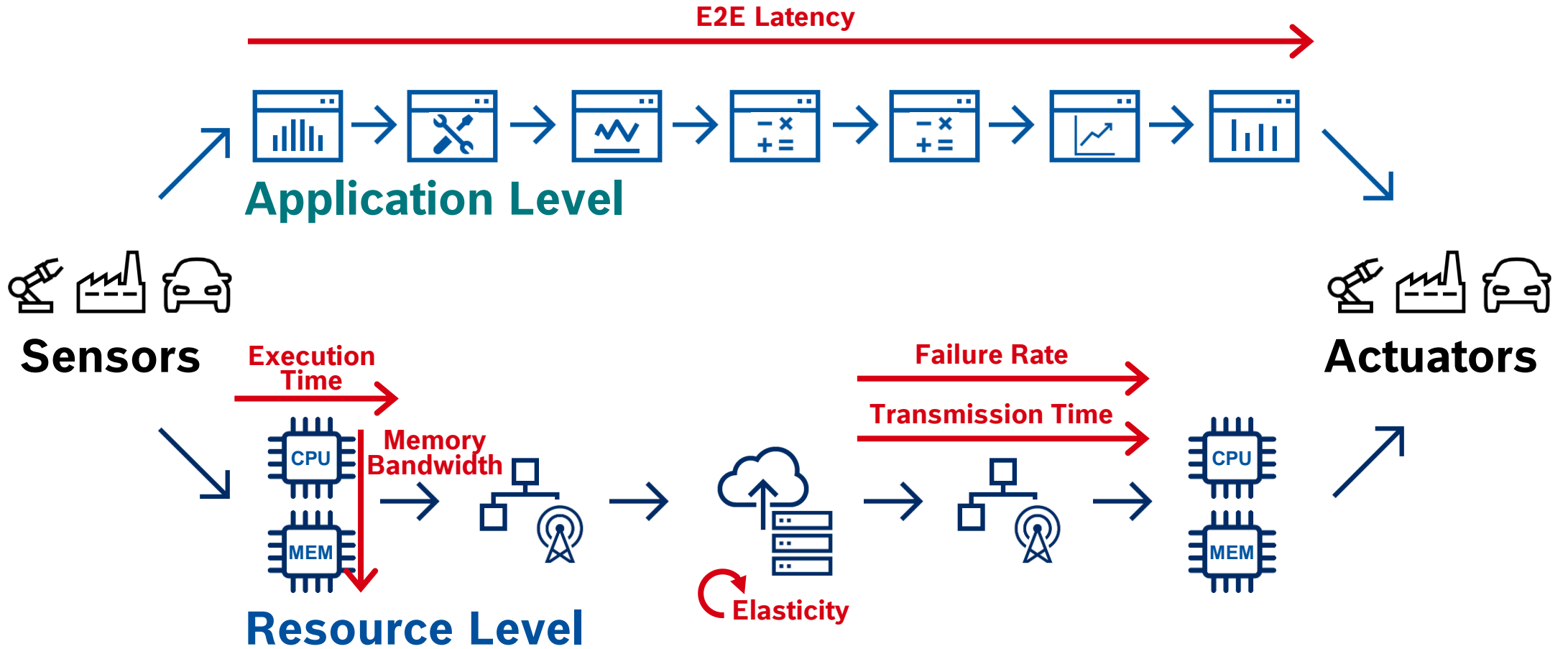
Building RDS is hard



- ▶ RDS system architecture is dynamic and complex
- ▶ Runtime monitoring and management is required
- ▶ Static upfront manual (monolithic) design is impossible

Reliable Distributed Systems (RDS)

Design Automation needed...



Reliable Distributed Systems (RDS)

First released Level 4 Automated Driving system...



... is a (simple) reliable distributed system.

Reliable Distributed Systems (RDS) Summary



Reliable Distributed Systems (RDS) establish the off-board "**Fabric**"



Disruptive approach

- ▶ Mature products are impacted significantly
- ▶ BUT: Linked to existing technologies
- ▶ Compare smartphone: Was created mostly from existing hardware parts, SW makes the difference
- ▶ "The whole is greater than the sum of the parts"
→ partnerships and ecosystems required



Research opportunities (examples):

- ▶ System-level Safety
 - ▶ How to make unreliable compute & sensors usable in reliable systems?
 - ▶ How to handle unreliable connections? How to handle resource conflicts?
- ▶ What does the Fabric and, by extension, vehicle architecture look like?
 - ▶ Autosar-style + Containers?
- ▶ What is the programming model of the Fabric and, by extension, the vehicle?
- ▶ How can developers & operators be supported?
 - ▶ How are the system, its aspects and capabilities, the application requirements, etc. modeled?
 - ▶ How is the fabric monitored and autonomically operated?

THANK YOU

AND MY CONTRIBUTORS PHILIPP
MUNDHENK, DIRK ZIEGENBEIN, ANTHONY
ROWE, DAKSHINA DASARI, MICHAEL
PRESSLER, DAMIAN DYRBUSCH...